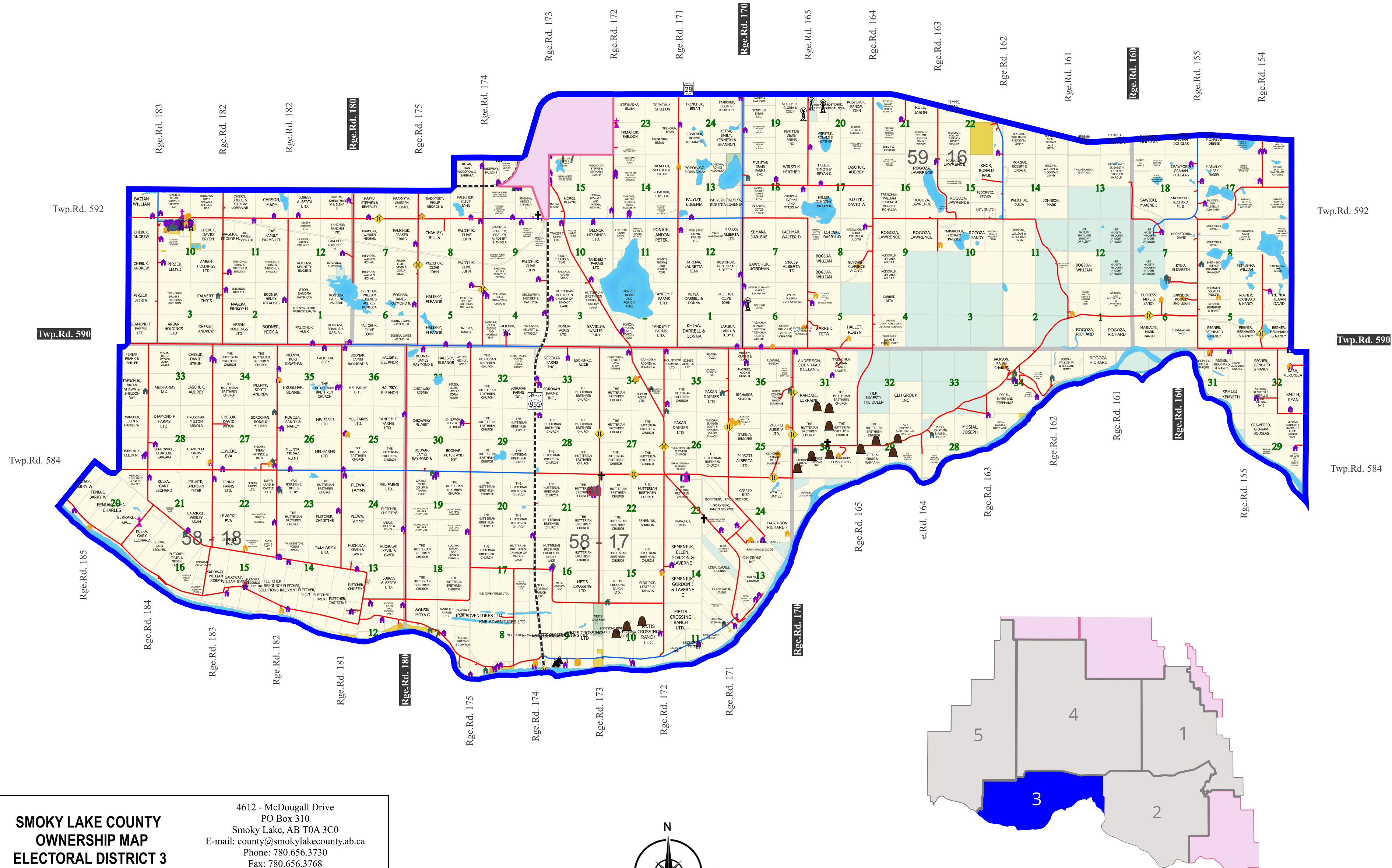




Electoral Division 3



LEGEND

Residential Buildings

- Residence
- Manufactured Home
- Cabin
- Multi Family

Recreational/Cultural Features

- Ball Diamonds
- Golf Course
- Campground
- Playground
- Curling Arena
- Community Hall
- Cemetery
- Church
- Church/Retreat

Miscellaneous Sites

- Gravel Pit/Stockpile
- Hotel/Motel
- Restaurant
- Retail Business
- Service Station
- Sewage Lagoon
- Tower
- Transfer Station
- Water Fill Station
- Water Treatment Plant

Transportation

- Bridge
- Paved Highways
- Gravel
- Paved
- Fibermat
- MG

Base

- Municipal Reserve
- Municipal Property
- Grazing Leases
- Titled Property
- Crown Land
- Provincial Park

SMOKY LAKE COUNTY OWNERSHIP MAP ELECTORAL DISTRICT 3

4612 - McDougall Drive
PO Box 310
Smoky Lake, AB T0A 3C0
E-mail: county@smokylakecounty.ab.ca
Phone: 780.656.3730
Fax: 780.656.3768
Toll Free in Alberta: 1.888.656.3730
Website: www.smokylakecounty.ab.ca

SCALE: 1:69,999.976194

Projection: UTM 12 NAD 83 Date: December 20, 2024

Smoky Lake County makes no representations or warranties regarding the information contained in this document, including, without limitation, whether said information is accurate or complete. Persons using this document do so solely at their own risk, and Smoky Lake County shall have no liability to such persons for any loss or damage whatsoever.

This document shall not be copied or distributed to any person without the express written consent of Smoky Lake County.

© 2024 Smoky Lake County. All Rights Reserved. Created by: Carole Dowhaniuk

